



Front and rear mowers

DISCO

CLAAS



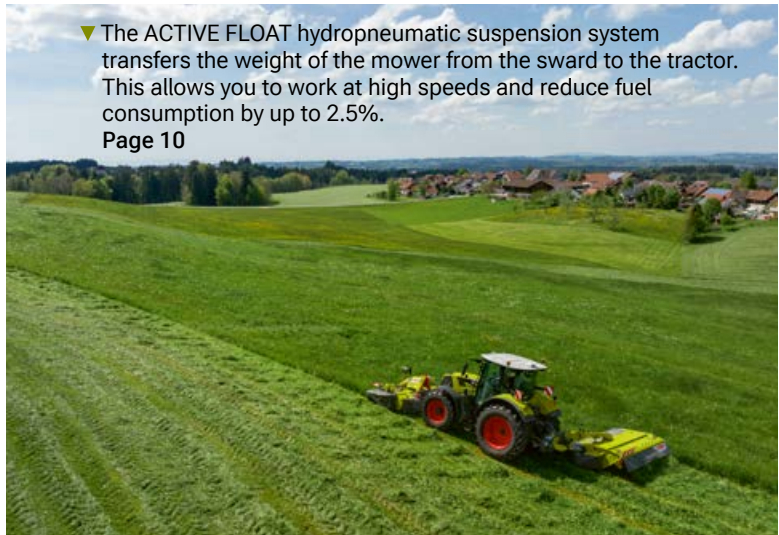


NEW

▲ DISCO CONTOUR rear mowers flawlessly follow every ground contour. They produce a clean cut and protect the grass sward. Page 14



▲ Wildlife protection. Infrared cameras scan the terrain and reliably detect animals based on their body heat, even when they are concealed in long grass. Page 28



▼ The ACTIVE FLOAT hydropneumatic suspension system transfers the weight of the mower from the sward to the tractor. This allows you to work at high speeds and reduce fuel consumption by up to 2.5%. Page 10



▲ With working widths of 2.20 m to 4.20 m, the MAX CUT mower bed achieves optimal results under all conditions. Page 6



► The value set on the ACTIVE FLOAT can easily be seen from the cab. Page 10



▼ The right model for every requirements. Thanks to their innovative technology and robust construction, CLAAS front mowers are the ideal solution for everyone who appreciates quality and reliability. Page 22

Impressive reliability.

Clean cut under all conditions, unrivalled durability and superbly engineered machines, right down to the last detail: with CLAAS technology you can overcome all your harvesting challenges.

Quality counts.

DISCO is in a class of its own. With this mower, you benefit from consistently high forage quality that is easy to process – the ideal basis for economic success.

Superb mowing results.

Experience meets technology to optimise your forage harvesting performance. Intuitive control and user-friendly operation simplify your day-to-day work.

Contents	
DISCO front and rear mowers	04
MAX CUT mower bed	06
ACTIVE FLOAT Economy PTO	10
Conditioners Drive line	12
DISCO rear mowers	14
DISCO rear mowers with central suspension	16
DISCO rear mowers with side suspension	18
DISCO front mowers	22
DISCO MOVE	24
DISCO PROFIL DISCO 3150 F	26
Deer protection Maintenance	28
Service and parts	30
Technical data	32

Mow more efficiently with DISCO.

DISCO mowers from CLAAS with their innovative MAX CUT mower bed are efficient, reliable and versatile. You can count on their robust construction and consistently high performance, whatever the task. And you can tailor the working width and specifications precisely to the needs of your farm.

Mowers for every requirement.

Whatever the job, you're ideally equipped with the versatile DISCO mowers. Lightweight models for rough terrain, front mowers that adapt to all conditions, and innovative MOVE linkage geometry ensure excellent ground-contour following and a clean cut.

The powerful rear mowers with a working width of up to 4.20 m offer maximum comfort and performance. Combined with a DISCO front mower, they considerably increase your efficiency and productivity.

Proud of 250,000 DISCO mowers built and 98% customer satisfaction. Behind every success are CLAAS employees whose knowledge and enthusiasm underpins everything we do.



98%

DISCO mowers are highly rated by our customers.



- ▲ Unique MAX CUT technology
 - Specially designed MAX CUT mower bed from CLAAS
 - Outstanding forage quality under all harvesting conditions
 - No dirt in the forage thanks to the tunnel effect
 - Working widths from 2.20 to 4.20 m

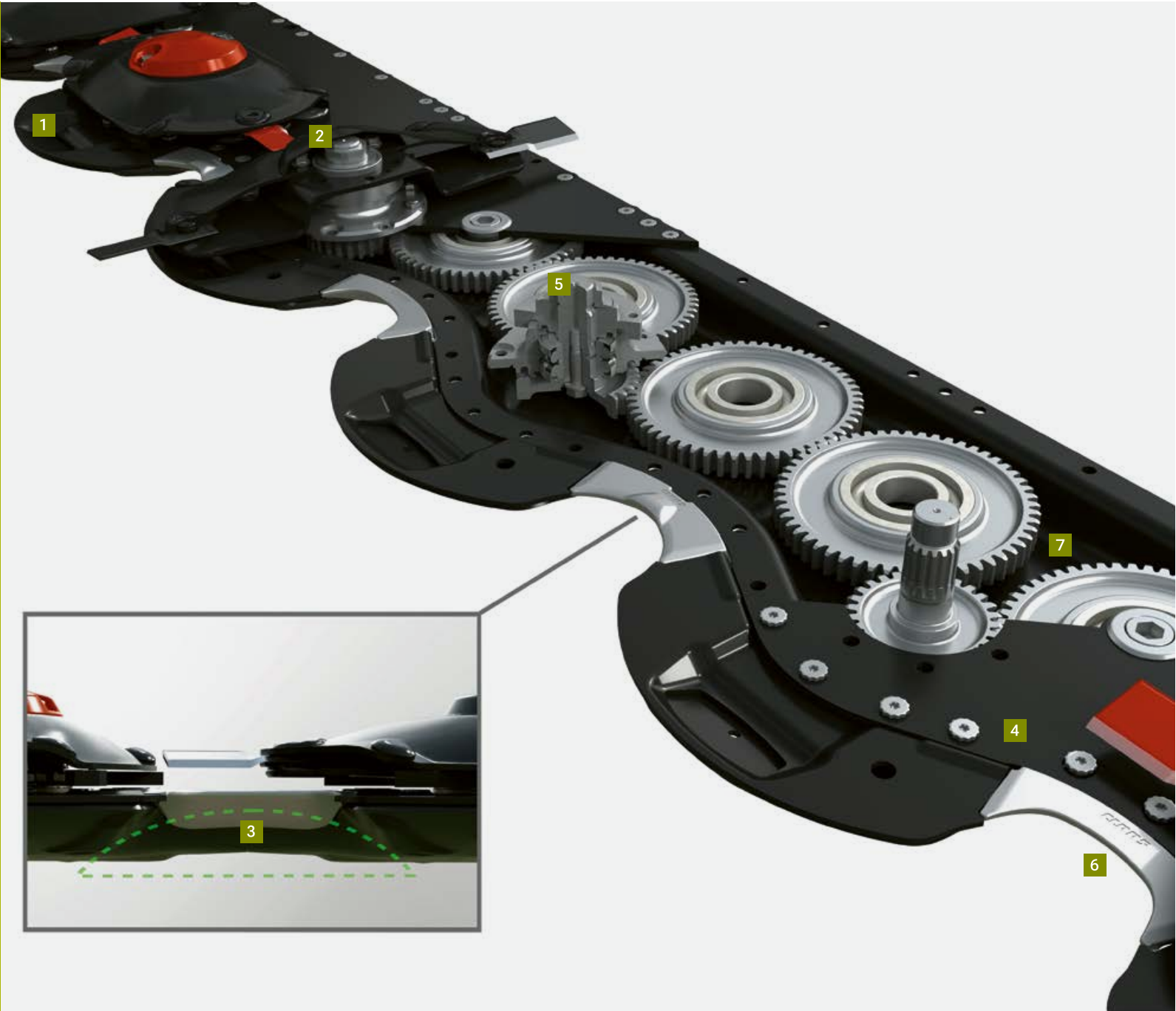
MAX CUT makes all the difference.

With working widths from 2.20 m to 4.20 m, the MAX CUT mower bed delivers optimum results under all conditions. The distinctive wave shape increases the cutting area, while mowing discs placed well to the front provide a clean, precise cut. The tunnel effect keeps the crop clean. The large drive gears guarantee effective power transmission. The extremely wear-resistant knives stay sharp for longer and rotate freely through 360°.

The wave-shaped base plate is formed from a single piece of steel with a pressing force of 3000 t. The cover plate is bolted instead of welded for durability as well as maximum deflection and impact resistance.



▲ Precise cut, clean crop. With MAX CUT you produce forage of the finest quality

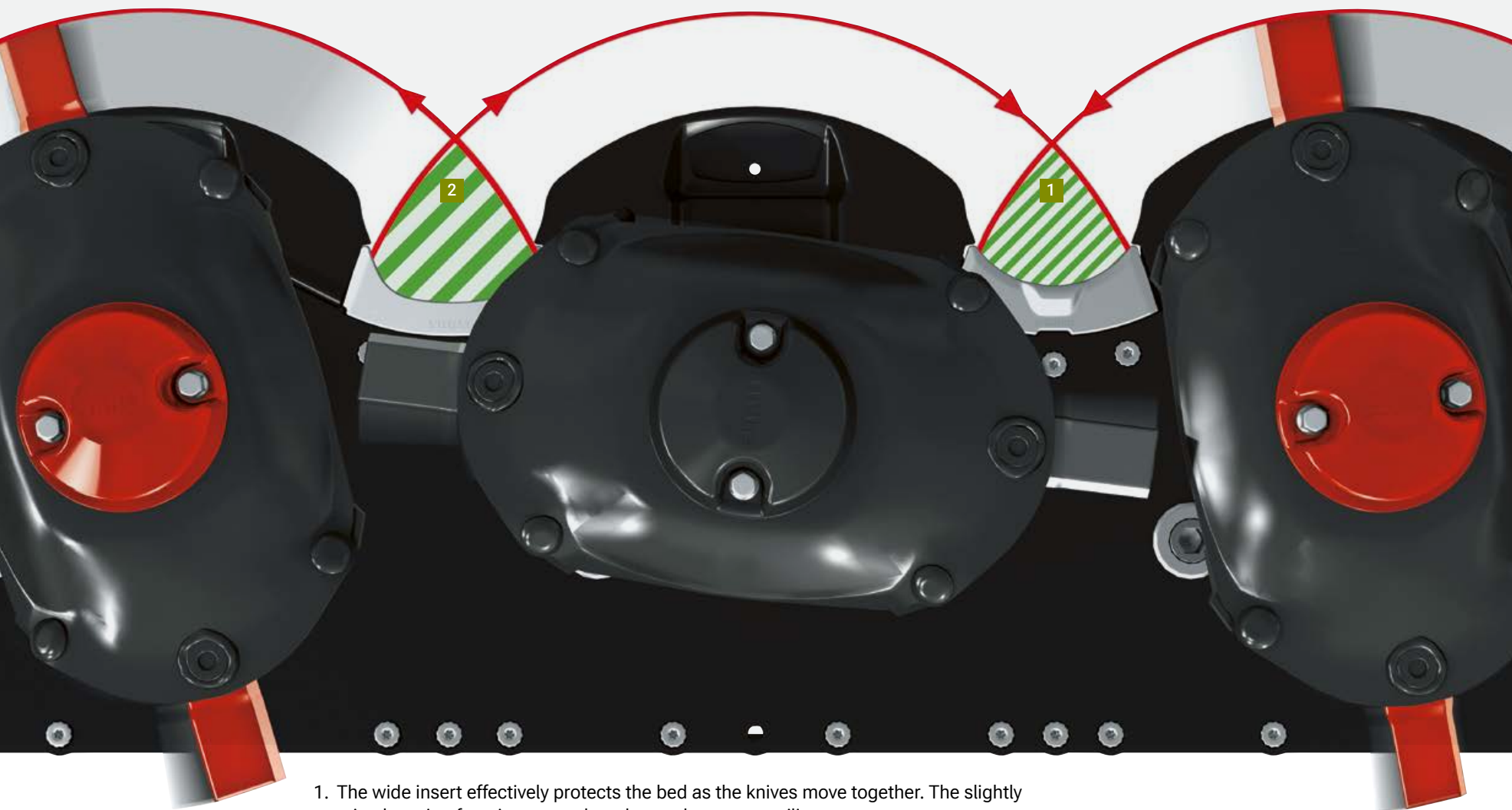


1. Wave-shaped base plate pressed from a single piece. The core structure of the MAX CUT mower bed is formed with a pressing force of 3000 t.
2. Mowing discs further to the front, with knives rotating 360°. Knives can be used on both sides before being replaced.
3. Optimum tunnel effect, further increased by skids with spoiler action. So dirt is deflected instead of landing in the forage.
4. Innovative bolting concept. Perfect positive locking and maximum deflection and impact resistance with no welds to create potential weak points.
5. SAFETY LINK safety module. Each individual mowing disc has a predetermined breaking point to protect the mower bed in the event of a collision.
6. Hardox inserts between skids increase the cutting surface and ensure maximum overlap between the circular knife paths for a clean cut.
7. Very small mower bed openings in the cover plate give the mower bed additional strength and stability.

Bolted and riveted instead of simply welded. The MAX CUT mower bed is unique on the market.

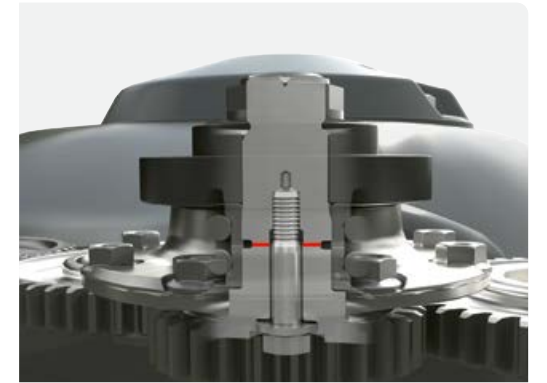
360°
freely rotating knives deflect obstacles without damaging their reverse side.

Distinctive wave shape for a perfect cut.



1. The wide insert effectively protects the bed as the knives move together. The slightly raised section functions as a shear bar and prevents soiling.
2. As the knives move apart, the slim-line insert causes them to leave the mower bed slightly earlier. This maximises the knife circle overlap and ensures optimum crop flow.

Collision protection. Each mowing disc is protected by a predetermined breaking point (SAFETY LINK) and will shear off the drive train in the event of a collision. An axial bolt holds the disc in place to prevent it flying off. Large satellite gears reliably accommodate load spikes.



▲ Anticlockwise rotating mowing discs have a red cap and the corresponding blades are also painted red



▲ A high-quality tungsten carbide coating gives the knife carrier optimum wear protection



“We’re deeply impressed by the work quality and stability of the mower combination and MAX CUT mower bed.”

Hughes Dubreuil,
Saint-Remy-sur-Bussy

Intelligently designed beds mow more precisely.

And last longer: the robust construction protects against wear, reduces maintenance and ensures lasting, reliable performance. The distinctive wave shape additionally creates space for two specially shaped Hardox inserts. They increase the cutting area and the knife circle overlap.

The result: a clean, uniform cut and consistently high forage quality even under difficult conditions.

Tunnel effect for a clean crop.

The mower bed is fitted with extra-wide skids. These act as spoilers to enhance the tunnel effect and deflect dirt from the forage. At the same time, the skids protect the base plate from damage.

Optional high- or double high-cut skids are useful if you want a higher cut. Simply bolt them on to increase the cutting height by 30 mm or 60 mm.

Permanently lubricated for a long service life.

The MAX CUT mower bed is permanently lubricated, and therefore entirely maintenance-free – for minimum effort and maximum service life. So your mower reliably delivers top performance, while you save time and money.

- ▼ Efficient mowing with ACTIVE FLOAT.
- Follows the ground contours perfectly
 - Enables high working speeds
 - Cuts fuel consumption by 2.5%
 - Reduces the crude ash content by up to 17%



**850 instead of 1000 rpm.
Same cutting quality, less fuel.**



ACTIVE FLOAT boosts your productivity.

The ACTIVE FLOAT hydropneumatic suspension system transfers the weight of the mower from the sward to the tractor. At the same time it reduces drift on slopes – improving ride comfort and mowing results.

The ground pressure of the mower can be adjusted from the driver's seat via a single-acting spool valve – allowing you to respond rapidly to wet spots, dry hillocks and patchy cover.



▲ With ACTIVE FLOAT the mower glides smoothly over the ground. The value set on the pressure gauge is easy to see from the cab.



Integrated economy PTO.

All DISCO disc mowers can be operated at a reduced PTO speed of 850 rpm when conditions allow. This integrated economy PTO significantly reduces fuel consumption.

"Reducing the PTO speed enables farms to cut fuel consumption by up to 22% on average. With a DISCO 9200 C AUTO SWATHER this equates to around 1.16 litres per hectare, or around 7 litres per hour." A student at Kiel University of Applied Sciences obtained these results in 32 field trials.

Conditioner mowers outsmart the weather.

Every hour counts when bad weather is looming. A DISCO conditioner mower significantly reduces the wilting and drying time of your crop. You can fit tine or roller conditioners to DISCO mowers from a working width of 2.60 metres. So you save precious time by not tedding and bring in your forage sooner.

Conditioners are available for DISCO front and rear mowers.

▼ Mowers with tine conditioners are ideal for the grass harvest. Roller conditioners made from polyurethane or steel are suited to leafy forage crops.



Tine conditioner.

Tine conditioners with V-shaped tines in a spiral configuration are ideal for harvesting grass crops. You can set the conditioning intensity via a baffle plate. The flexibly mounted tines deflect and pass around any stones that find their way into the conditioner – avoiding repair costs.

Polyurethane roller conditioner.

Leafy forage crops such as alfalfa require gentle conditioning. The aim is to crush the stalks without destroying the leaves. DISCO mowers use V-shaped interlocking polyurethane rollers which crush the hard stalks while protecting the leaves.

Steel roller conditioner.

Wear-resistant steel roller conditioners effectively handle thick-stemmed crops like sorghum. The specially designed roller profile with tapered edges ensures intensive conditioning and uniform wilting, even with heavy or wet material.

More flexible swath laying.

All conditioner mowers are fitted with adjustable swathing plates. Two additional telescopic swathing plates for laying narrow swaths are optionally available for roller conditioners. Tine conditioners can be fitted with a wide crop spreader to distribute the crop across the full working width.



Dry quicker,
bring in sooner.

- ▲ Make effective use of short harvesting windows:
- Shorten drying time
 - Reduce wilting time
 - Save tedding



- The headland stop is fitted to conditioner machines as standard

Packing a punch at the rear.

DISCO rear mowers are productive and reliable, whatever the conditions. Whether your fields are large or small, the lightweight machines achieve high work rates with low fuel consumption and follow even tricky ground contours flawlessly. With 22 models to choose from, you're bound to find the right rear mower for your needs.

All mowers are robustly designed and have the same core component: the MAX CUT mower bed. They share many other common features too.

Rear mower with central suspension.

DISCO CONTOUR mowers adapt to ground contours by pivoting freely, supported by hydropneumatic ACTIVE FLOAT. This ensures good ground-contour following whatever the conditions. In rear mowers with central suspension, the centre of gravity suspension is also provided by ACTIVE FLOAT.

Rear mowers with side suspension.

In mower units with side suspension, a large suspension spring acts on the middle of the machine frame. The inner and outer support ensure that the force is transferred evenly to the mower bed. A small spring additionally suspends the mower bed drive.

Fuel-efficient drives.

Low-maintenance drives transfer the PTO power efficiently to the robust double gearbox. In less-dense crops you can reduce the speed from 1000 to 850 rpm – or from 540 to 460 rpm in the DISCO 10 series. This reduces diesel consumption while maintaining mowing performance.

Safe transport position.

The transport position of 95°, 105° and 120° and centre of gravity close to the tractor ensure uniform loading of the rear axle. This prevents bouncing when driving on the road. You can negotiate low structures with ease, and the rear view mirror gives you a clear view to the rear at all times.

High area output and outstanding forage quality.



"With so many models in the DISCO family to choose from, you're bound to find the perfect DISCO mower for your farm."

Christian Schmidt, DISCO assembly supervisor

- ▼ 3 model series, 22 mowers.
 - Working widths of 2.20 m to 4.20 m
 - High productivity with low fuel consumption
 - Efficient hydropneumatic centre of gravity suspension (optional)
 - Intuitive and comfortable operation



Rear mowers with central suspension:

DISCO CONTOUR

- 2.60 to 4.20 m working width
- MAX CUT mower bed with 6 to 10 mowing discs
- Central suspension with hydropneumatic suspension
- 120° transport angle
- 1000 (850) rpm PTO speed

Rear mowers with side suspension:

DISCO 100 series

- 2.60 to 3.40 m working width
- MAX CUT mower bed with 6 to 8 mowing discs
- Side suspension with spring suspension
- 105° transport angle
- 1000 (850) rpm PTO speed

DISCO 10 series

- 2.20 to 3.00 m working width
- MAX CUT mower bed with 5 to 7 mowing discs
- Side suspension with spring suspension
- 95° transport angle
- 540 (460) rpm PTO speed



- ▼ All for smoother mower guidance.
- Bolted mower bed designed to withstand torsion
 - Central suspension at mower centre of gravity
 - Two free pivot points transverse to travel direction
 - Adjustable suspension spring on the arm



Smooth mower
guidance for a
precise cut.

The mower adapts perfectly to your fields.

With the DISCO CONTOUR series, you've a productive all-rounder at your side. Central suspension allows the mower to follow the ground contours perfectly and delivers precise cutting results. At the same time, with vector folding and a compact 120° transport position, you can travel safely on the road.

Prefer a mower without conditioner or a choice of tine or roller conditioner? It's up to you. The roller conditioners come with polyurethane or steel rollers and an optional double drive roller.



▼ Even the biggest DISCO folds up small: compact transport position despite 4.20 m working width



▼ Ground-contour following even on slopes. The mower units of the CONTOUR series pivot freely and follow the ground contours precisely.

▼ Optional counterweights provide more stability, higher ride comfort and safe deployment on hilly ground.

Advantages that make your work easier.

- MAX CUT mower beds with high- and double high-cut skids (optional)
- ACTIVE FLOAT hydropneumatic suspension
- Kennfixx hydraulic connectors for convenient coupling
- Hydraulic non-stop collision protection
- Clearly visible height display
- Hydraulic transport lock (optional)
- Hydraulic swath curtain folding (optional)
- Counterweights for added stability (optional)



Unique vector folding

The mower folds in with the aid of a double-acting floating piston ram, gradually braking before reaching the end point. It is then securely locked in the 120° transport position. To reduce the road transport height, you can fold up the protective side covers either mechanically or hydraulically. This means that the mower can be safely transported to the next field at a height of less than 4.0 m and with its centre of gravity close to the tractor. These compact transport dimensions allow you to negotiate narrow field entrances with ease, despite the large working width.

Reliable operation.

All DISCO rear mowers are fitted with mechanical collision protection. When encountering an obstacle, the mower unit swings smoothly back and over it. This avoids damage and prolonged interruptions. After a collision, just back up briefly to reset the mower, then you can carry on. With its robust components, the mowers are ideally equipped for continuous use. The hydraulic components are mounted in the frame for optimum protection.

Working width (model)	4.20 m (4400) 3.80 m (4000) 3.40 m (3600 / C / RC) 3.00 m (3200 / C / RC) 2.60 (2800 / C / RC)
Type	Central suspension
Mower bed	MAX CUT
PTO shaft speed	1000 (850) rpm

120°
transport position prevents
bouncing during road travel.

Economise on fuel, not on performance.

The robustly designed, side-suspended rear mowers in the DISCO 100 series offer high area output with low power requirements. User-friendly, reliable technology ideally suited to your day-to-day operations.

The MAX CUT mower bed with integrated economy PTO contains the same high-quality components as the larger DISCO CONTOUR models. Quick knife change and permanent lubrication are also included as standard.

The unique centre of gravity suspension brings the advantages of central pivoting suspension to the side-suspended models.

Low-maintenance drive.

The mower is driven via especially low-maintenance PTO drive shafts that do not require a safety chain. The robust belt drive absorbs peak loads and is tensioned by means of a rotary knob without the need for tools.

Mechanical collision protection.

The overload protection responds immediately, swinging the mowing unit out of the way as soon as you encounter an obstacle. An additional support frame protects the outer edge of the mower from damage.

Easy hitching.

The DISCO 100 is quick and easy to hitch because the left lower link pin is seated lower down. The built-in bracket for light plugs and hydraulic hoses, along with the pivoting drive shaft support, allow for more convenient handling. KENNFIXX® grips make it easy to connect the hoses.

Working width (model)	3.40 m (360) 3.00 m (320 / C) 2.60 m (280 / C / RC)
Type	Side suspension
Mower bed	MAX CUT
PTO shaft speed	1000 (850) 540 (460)

Durable and easy to pull with working widths of up to 3.40 m.



▲ With the right conditioner, you can significantly reduce the drying time of the crop. Additional internal and external swathing discs optimise swath formation.



▲ Narrow transport width and clear view to the rear: in the 105° transport position you can travel safely on the road with the DISCO 100.

▼ Line of force meets centre of gravity: the central suspension spring brings the advantages of central pivoting suspension to side-suspended rear mowers.



- ▲ Practical benefits for you:
- Attach and remove quickly thanks to straightforward handling
 - Mow large fields with precision with MAX CUT technology
 - Save fuel with speed reduced to 850 rpm
 - Travel safely on the road in the 105° position

Big benefits for small fields.



- DISCO 10 simply does a great job.
- Mow small fields with precision with MAX CUT technology
- Mow safely on slopes thanks to ideal centre of gravity
- Save fuel with speed reduced to 460 rpm
- Travel comfortably on the road with a clear view to the rear

Compact mower, worthwhile from the very first cut.

The side-suspended mowers in the DISCO 10 series are the perfect solution for smaller farms or farms with rugged terrain. They are robust, economical and easy to operate – ideal for narrow fields and steep slopes.

The MAX CUT mower bed with integrated economy PTO and CLAAS centre of gravity suspension ensures a clean cut and high efficiency. So you can mow even your smallest field with big-league technology.

MAX CUT mower bed with 540 (460) rpm economy PTO

Unique centre of gravity suspension. This is how CLAAS brings the advantages of central pivoting suspension to the side-suspended models: the large suspension spring acts on the middle of the machine frame, so the line of force passes straight through the centre of gravity. The inner and outer support ensure that the force is transferred evenly to the mower bed. A small spring additionally suspends the mower bed drive.



◀ The 95° transport folding shifts the mower's centre of gravity to the middle and ensures that the tractor's rear wheels are more uniformly loaded. So you can travel safely on the road with an unrestricted view to the rear.



◀ With a weight-conscious design and specially reinforced components, the DISCO 10 is ideal for mowing roadside verges and embankments with inclines of up to 45°.



Low-maintenance drive.
The DISCO 10 is driven by a low-maintenance PTO drive shaft. A powerful belt drive reliably absorbs load peaks and can be re-tensioned with a rotary knob without needing tools.

Precision cut.
With the optional swathing plate, you can leave a clear track between the standing crop and the mown grass. So you can line up for the next pass without soiling the forage.

Super-user-friendly.
The slightly lower position of the lower link pin, pivoting drive shaft support and integrated bracket for the light plugs and hydraulic hoses make for easy hitching – along with various hitching category options and quick-hitch mounting frames.

Mechanical collision protection.
The overload protection is instantly activated when the mower encounters an obstacle – swinging the unit back and out of the way. After backing up briefly to reset the mower, you can carry on.

Working width (model)	3.00 m (32), 2.60 m (28), 2.20 m (24)
Type	Side suspension
Mower bed	MAX CUT
PTO shaft speed	540 (460) rpm

A clean cut for better forage.

DISCO front mowers from CLAAS stand for maximum productivity and outstanding forage quality. The three series are versatile and reliable performers that can confidently handle any terrain. So you can count on top mowing results, right from the first metre.

All front mowers are fitted with MAX CUT mower beds for optimum cutting quality. Tine or roller conditioners are available on request.

DISCO MOVE. The master of adaptation.

Thanks to its vertical movement range of 1000 mm, the DISCO MOVE adapts to any terrain. So you can work in a calm, controlled and precise manner, even with large tractors with heavy linkages or at high speeds.

DISCO PROFIL. The combi-mower.

Combine the DISCO PROFIL with a rear or large-scale mower to create a highly productive dream team. The patented PROFIL linkage geometry adapts to every ground contour with speed and precision.

DISCO 3150 F. The entry model.

The DISCO 3150 F scores highly not only on account of its good price-performance ratio. Robustly built, with high-end technology and a clean cut, it's your entry-level front mower with professional-level technology.

Productivity and forage quality
times three. 



- ▲ 3 model series, 13 mowers.
 - Working widths from 3.00 to 3.40 m
 - Efficient hydropneumatic centre of gravity suspension (optional)
 - Available without conditioner or with tine or roller conditioner

DISCO MOVE

- 3.00 to 3.40 m working width
- MAX CUT mower bed with 7 or 8 mowing discs
- ACTIVE FLOAT hydropneumatic suspension
- Quick hitch A-frame and direct attachment

DISCO PROFIL

- 3.00 to 3.40 m working width
- MAX CUT mower bed with 7 or 8 mowing discs
- Spring suspension or ACTIVE FLOAT (optional)
- Quick hitch A-frame

DISCO 3150 F

- 3.00 m working width
- MAX CUT mower bed with 7 mowing discs
- Spring suspension or ACTIVE FLOAT (optional)
- Quick hitch A-frame



▲ Compact hitch at the front linkage gives the DISCO PROFIL generous ground clearance at the headland



As versatile as you.
DISCO front mowers adapt to your farm.

Up the pace with DISCO MOVE.

With the DISCO MOVE you can harvest faster at higher speeds. The front mower adapts to the terrain with speed and precision, even with large tractor linkages. This is due to the generous vertical freedom of movement, which enables precise ground-contour following, even on rough ground. The crop stays clean and you get the maximum amount of energy from your forage.

The core component of the DISCO MOVE is the proven MAX CUT mower bed. Not only does it deliver a clean, uniform cut – it is remarkably durable and maintenance-friendly.

Flawless ground-contour following.

The DISCO MOVE moves both horizontally and vertically, independently of the tractor linkage, and fully accommodates the mower lift height. The low position of the mower bar pivot point for small bumps plus the MOVE linkage geometry for larger bumps ensure flawless adaptation to the terrain – with unique vertical freedom of movement of 1000 mm.

ACTIVE FLOAT hydropneumatic suspension, adjustable while on the move, is integrated into the headstock as standard.

Carefully designed headstock.

The multifunctional headstock makes for easy hitching. Attach the mower either via the tractor linkage or a quick-hitch A-frame – without the need for any support legs. The compact construction gives you a clear view to the front at all times.

Easy to use.

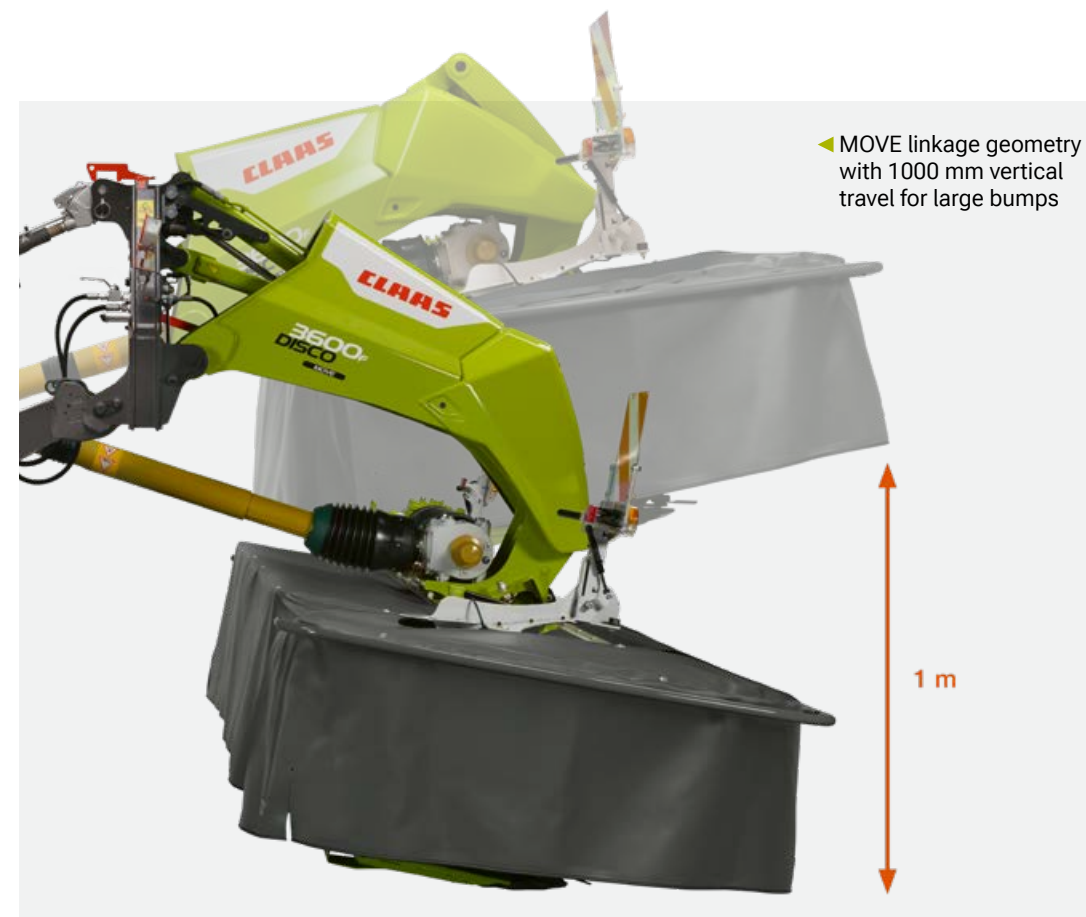
The mounted adjustment guide indicates the correct lower link height at a glance. Colour-coded KENNFIXX® connectors simplify the process of connecting and disconnecting hydraulic hoses. You can select your preferred side for mounting the hydraulic hoses and pressure gauge, depending on the tractor specification.

Working width (model)	3.40 m (3600 F / RC / FRC) 3.00 M (3200 F / RC / FRC)
Type	Central suspension
Mower bed	MAX CUT
PTO shaft speed	1000 (850) rpm

▼ The DISCO MOVE reaches new heights when used in conjunction with a DISCO large-scale mower



▼ Optional double mirrors mounted on the mower increase road safety at difficult road junctions



Your advantages in the field:

- Harvest faster with optimal ground-contour following
- Mow more precisely with MAX CUT technology
- Save time with easy hitching and unhitching
- Stay relaxed with automated processes

Intelligence meets terrain.



▲ Simply more relaxing. Automated processes improve the quality of work and take the pressure of the operator. For example, the front mower can be controlled directly via the hydraulics of a DISCO large-scale mower at the rear (depending on specification).

DISCO PROFIL. Patented PROFIL linkage geometry. Precision cut.



DISCO PROFIL takes to the terrain, not to chance.

PROFIL front mowers are impressive right across the board. They really play to their strengths in combination with a rear or large-scale mower. But they also perform superbly on their own.

Key to this is the patented PROFIL linkage geometry. It enables the mower to adapt rapidly and precisely to every ground contour – delivering outstanding cutting results, whatever the terrain.



▲ The freely pivoting suspension compensates for uneven ground across the direction of travel



▲ The low pivot point allows the DISCO to follow the ground contours precisely

Three-dimensional ground-contour following.

PROFIL linkage geometry ensures precise, uniform mowing, even on uneven terrain. The mower follows the undulations across the direction of travel exactly. In the longitudinal direction, the trailed suspension reliably guides your mower over the ground, while the low pivot point accommodates small bumps – so you can avoid digging in and protect the sward.

▼ The mower has adjustable spring suspension or ACTIVE FLOAT, depending on the specification



▼ Intelligent transverse oscillation with the angled pivot point ensures a clean cut and protects the sward



DISCO 3150F. Low weight. High performance.



DISCO 3150 F is the perfect match for small tractors with big workloads.

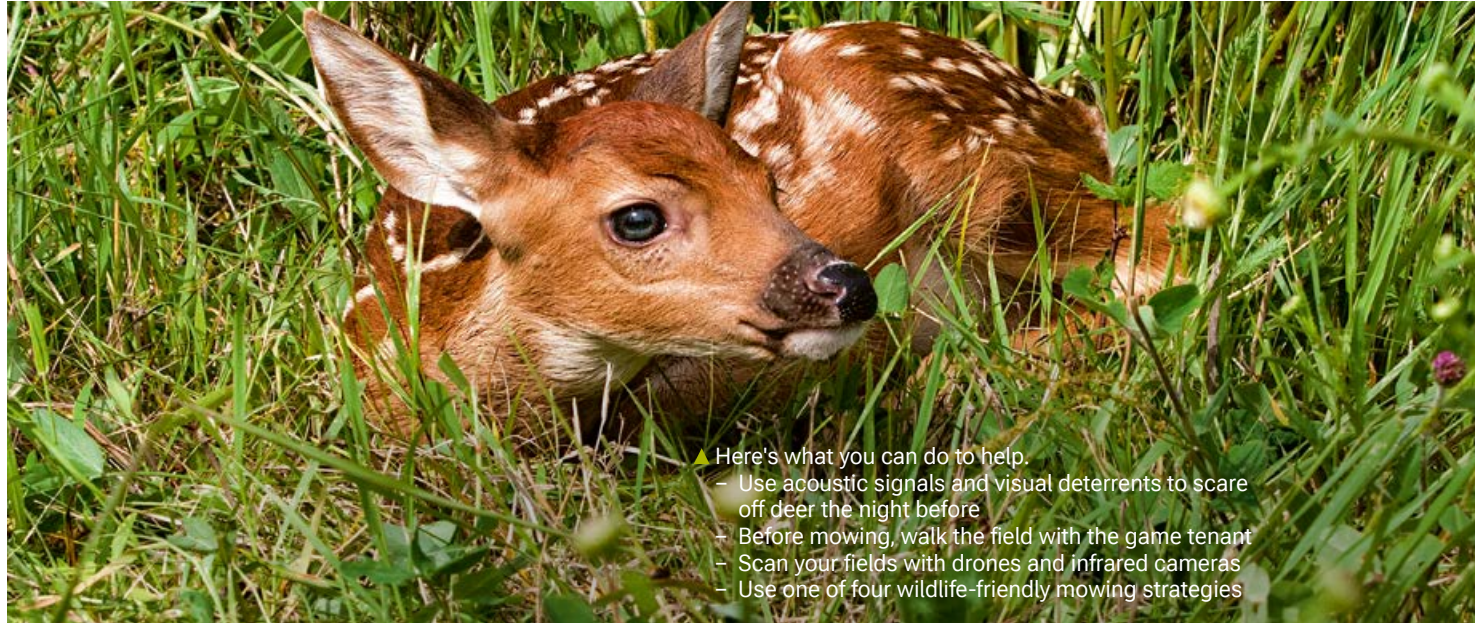
With the agile DISCO 3150 F, you benefit from proven professional equipment at an attractive price. The MAX CUT mower bed gives you a clean, precise cut. The tunnel effect minimises the crude ash content of the forage – significantly improving the quality of your forage. A swathing disc and half-drum are included as standard equipment, ensuring the crop is laid in a tidy swath.

The short hitch close to the tractor ensures accurate ground-contour following and a clean cut. The compact dimensions make the machine suitable for small specialist tractors too.

Together we can protect the defenceless.

The start of the mowing season between April and June marks the start of life for much of our wildlife – and a time when they are particularly at risk. Fawns instinctively hide in long grass, and keep low to the ground when frightened by noise, rather than fleeing. Almost impossible to spot, they are in grave danger as the mower approaches. Lives can be saved if you look more closely and take action.

In partnership with farmers, researchers and gamekeepers, CLAAS has researched a number of innovative and practical solutions for more precise detection of wildlife.



- Here's what you can do to help.
- Use acoustic signals and visual deterrents to scare off deer the night before
 - Before mowing, walk the field with the game tenant
 - Scan your fields with drones and infrared cameras
 - Use one of four wildlife-friendly mowing strategies

Four strategies that save lives:

1. Advance mowing the evening before

Mow the field margins the night before. The altered environment makes the mother anxious, prompting her to take her young to a safe location.

2. Mow the headland first

Start at the headland. Then mow the field from the inside towards the outside. This gives deer the chance to flee to safety.

3. Mow from inside to out

Instead of mowing from the outside in, do the opposite. This creates escape routes and prevents deer from being trapped in the final cut.

4. Start from the roadside

For fields running alongside a road, start at the road-side first. Then keep mowing inwards, so that the deer will not run out into the traffic.



- ▲ Drones with infrared cameras scan the field. They can reliably detect fawns in long, thick grass from their heat signature



- ▲ Always ready for the next job.
- Handy red-painted guides for easy adjustment
 - Good accessibility for easy maintenance
 - Long maintenance intervals for fewer downtimes

- ▼ All DISCO mowers have distinctive red markers to help you adjust them optimally: 1 Working height adjustment 2 ACTIVE FLOAT gauge 3 Kennfixx hydraulic hose indicator



Saving you time, when every minute counts.

DISCO mowers are easy to operate and quick to maintain. Carefully considered details are designed to simplify your day-to-day work and keep downtimes to a minimum – whether during operation, cleaning or maintenance. A host of practical aids help you adjust your machine to perfection. And we've painted them red so they are easy to see.

Replacement knives are stored on the mower in a rainproof box and can be swiftly changed in the field using the integrated fitting lever – which is also painted red so you can easily spot it if you put it down in the field.



- ▲ Colour-coded lubrication stickers clearly indicate when each lubrication point has to be lubricated

Good accessibility.

The protective covers fold upwards all the way around, allowing easy access to the mower bed and all maintenance points. The outer edge of the cover, which is more prone to wear, can be replaced separately.

All DISCO mowers have an integrated knife box with replacement knives. The drive shafts have a lubrication interval of 250 hours, which further reduces maintenance time and costs.

On call for you.

At CLAAS, keeping you operational is our top priority. With our comprehensive range of services, parts and consumables, we ensure that your machines always perform optimally.

Our support includes a wide range of maintenance and repair services available from your dealer, an extensive line-up of ORIGINAL parts and consumables as well as digital tools which support your planning and decision-making.

Confidence comes from knowing you are always ready for action.

Rapid service for greater operational reliability.

You can count on our CLAAS service partners and their qualified mechanics to provide certified workshop services, comprehensive maintenance support and professional checks to keep your machines running reliably all year round.

CLAAS ORIGINAL for stand-out performance.

When you choose CLAAS ORIGINAL parts, you are choosing quality and performance. Every replacement and wear part is manufactured to the most rigorous standards and matched precisely to the specifications of your CLAAS machine. This ensures that every component fits perfectly into the overall system.



▲ Provide support whatever the situation? That's what we do. If necessary, we can drive out to you in the field and fix machine problems quickly and expertly on the spot.

Long time
no see?

Wear
protection is
worthwhile.

On call for you.
CLAAS Service & Parts.

More than 97% of parts
are dispatched on the
same day.



CLAAS ORIGINAL parts, including
PREMIUM LINE for very heavy-duty applications
and SILVER LINE for older models,
ensure maximum efficiency.

All parts are readily available.

A sophisticated logistics system ensures that any parts you require are available at very short notice. Thanks to our extensive network of CLAAS dealerships, spare parts are always available nearby or can be quickly delivered from one of our central logistics warehouses. In fact, more than 97% of parts are dispatched on the same day so that your machine is ready for use again as soon as possible. If you need parts urgently, we offer express solutions to provide you with even faster support.

The Parts Shop is open around the clock.

With CLAAS connect on your smartphone, you can access important parts, lubricants and consumables at any time from anywhere. Parts Doc and the Parts Shop allow you to identify parts easily and order them directly.

DISCO ¹		3600 FRC MOVE	3600 FC MOVE	3600 F MOVE	3200 FRC MOVE	3200 FC MOVE	3200 F MOVE	3600 FRC PROFIL	3600 FC PROFIL	3600 F PROFIL
Mower										
Front mowers										
Working width	m	3.40	3.40	3.40	3.00	3.00	3.00	3.00	3.40	3.40
Transport width	m	3.40	3.40	3.40	3.00	3.00	3.00	3.40	3.40	3.40
Machine height in transport position	m	-	-	-	-	-	-	-	-	-
Folding angle in transport position	°	-	-	-	-	-	-	-	-	-
Weight (depending on conditioner)	app- rox. kg	1420	1390	1060	1250	1220	970	1150	1120	830
MAX CUT mower bed ²		●	●	●	●	●	●	●	●	●
Discs (2 knives per disc)		8	8	8	7	7	7	8	8	8
Quick knife change		●	●	●	●	●	●	●	●	●
Conditioner ¹		PU / steel	-	-	PU / steel	-	-	PU	-	-
Conditioner speed	rpm	950	900 / 770	-	950	900 / 770	-	950	900 / 770	-
Spring suspension		-	-	-	-	-	-	●	●	●
ACTIVE FLOAT suspension		● ³	● ³	● ³	● ³	● ³	● ³	○ ³	○ ³	○ ³
Tractor requirements										
Hitch category		II	II	II	II	II	II	II	II	II
PTO shaft speed	rpm	1000 (850)	1000 (850)	1000 (850)	1000 (850)	1000 (850)	1000 (850)	1000 (850)	1000 (850)	1000 (850)
Hydraulic spool valves		1 × sa (+1 × da ⁴ + 1 × sa ³)						(1 × da ⁴ + 1 × sa ³)		
Equipment										
Hydr. folding protective side covers		○ ⁴	○ ⁴	○ ⁴	○ ⁴	○ ⁴	○ ⁴	○ ⁴	○ ⁴	○ ⁴
Wide crop spreading		-	○	-	-	○	-	-	○	-
Adjustable swathing plate		●	●	-	●	●	-	●	●	-
Outside swathing disc		-	-	● (2x)	-	-	● (1x)	-	-	● (2x)
High-cut skids (+30 mm)		○	○	○	○	○	○	○	○	○
Double high-cut skids (+60 mm)		○	○	○	○	○	○	○	○	○
Wear skids		○	○	○	○	○	○	○	○	○
Wear skids (+15 mm)		○	○	○	○	○	○	○	○	○
Mower bed protection device (for intensive use)		○	○	○	○	○	○	○	○	○
Illuminated warning signs		○ ⁶	○ ⁶	○ ⁶	○ ⁶	○ ⁶	○ ⁶	○ ⁶	○ ⁶	○ ⁶
Double mirror		○	○	○	○	○	○	○	○	○
Hydr. transport lock		-	-	-	-	-	-	-	-	-
Mechanical collision protection		-	-	-	-	-	-	-	-	-
Storage frame		-	-	-	-	-	-	-	-	-
Headland limit stop		-	-	-	-	-	-	-	-	-

¹ C = tine conditioner, RC = roller conditioner, F = front, T = trailed, no suffix = without conditioner, PU = polyurethane
² Standard cut height 40 mm (infinitely variable adjustment 30–70 mm)
³ 1x sa required for setting the ACTIVE FLOAT
⁴ 1x da required for hydraulic folding of the protective cover
⁵ With float position
⁶ Folding
⁷ Swathing plate with these models
⁸ Hydraulic with these models
⁹ Swivelling process and protective cover folding combined with hydraulic non-stop collision protection

3200 FRC PROFIL	3200 FC PROFIL	3200 F PROFIL	3150 F	4400 CONTOUR	4000 CONTOUR	3600 RC CONTOUR	3600 / 3600 C CONTOUR	3200 RC CONTOUR	3200 / 3200 C CONTOUR	2800 RC CONTOUR	2800 / 2800 C CONTOUR
Front mowers				Centrally pivoted rear mowers							
3.00	3.00	3.00	3.00	4.20	3.80	3.40	3.40	3.00	3.00	2.60	2.60
3.00	3.00	3.00	3.00	-	-	-	-	-	-	-	-
-	-	-	-	3.90	3.90	3.57	3.57	3.19	3.19	2.86	2.86
-	-	-	-	120	120	120	120	120	120	120	120
1000	970	740	685	1160	1040	1300	950 / 1280	1180	870 / 1150	1070	810 / 1050
●	●	●	●	●	●	●	●	●	●	●	●
7	7	7	7	10	9	8	8	7	7	6	6
●	●	●	●	●	●	●	●	●	●	●	●
PU	-	-	-	-	-	PU / steel	-	PU	-	PU	-
950	900 / 770	-	-	-	-	940	- / 910	940	- / 910	940	- / 910
●	●	●	●	-	-	-	-	-	-	-	-
○ ³	○ ³	○ ³	○ ³	●	●	●	●	●	●	●	●
II	II	II	II	III	III	III	II / III	III	II / III	II	II
1000 (850)	1000 (850)	1000 (850)	1000 (850)	1000 (850)	1000 (850)	1000 (850)	1000 (850)	1000 (850)	1000 (850)	1000 (850)	1000 (850)
(1 × da ⁴ + 1 × sa ³)				1 × da ⁵ 1 × da ⁹ (+1 × sa) ³	1 × da ⁵ 1 × da ⁴ (+1 × sa) ³	1 × da ⁴ (+ 1 × sa ³)					
○ ⁴	○ ⁴	○ ⁴	-	○	○	-	-	-	-	-	-
-	○	-	-	-	-	-	- / ○	-	- / ○	-	- / ○
●	●	-	-	-	-	●	- / ●	○	- / ●	●	- / ●
-	-	● (1x)	● (1x)	○	○	-	○ / -	-	○ / -	-	○ / -
○	○	○	○	○	○	○	○	○	○	○	○
○	○	○	-	○	○	○	○	○	○	○	○
○	○	○	○	○	○	○	○	○	○	○	○
○	○	○	○	-	-	-	-	-	-	-	-
○	○	○	-	○	-	○	- / ○	○	- / ○	○	- / ○
○ ⁶	○ ⁶	○ ⁶	○	○	○	○	○	○	○	○	○
○	○	○	○	-	-	-	-	-	-	-	-
-	-	-	-	○	○	○	○	○	○	○	○
-	-	-	-	● ⁹	●	●	●	●	●	●	●
-	-	-	-	○	○	○	○	○	○	○	○
-	-	-	-	●	●	●	●	●	●	●	●

CLAAS continually develops its products to meet customer requirements. This means that all products are subject to change without notice. All descriptions and specifications in this brochure should be considered approximate and may include optional equipment that is not part of the standard specifications. This brochure is designed for worldwide use. Please refer to your nearest CLAAS dealer and their price list for local specification details. Some protective panels may have been removed to present the function more clearly in photographs. To avoid any risks, you should never remove these protective panels yourself. In this context, please refer to the relevant instructions in the operator's manual.
All technical specifications relating to engines are based on the European emissions regulation standards: Stage. Any reference to the Tier standards in this document is intended solely for information purposes and ease of understanding. It does not imply approval for regions in which emissions are regulated by Tier.

DISCO ¹		360	320 C	320	280 RC	280 C		32	28	24		
Mower							100 series side-suspended rear mowers				10 series side-sus- pended rear mowers	
Working width	m	3.40	3.00	3.00	2.60	2.60	3.00	2.60	2.20			
Transport width	m	-	-	-	-	-	-	-	-			
Machine height in transport position	m	3.80	3.50	3.40	3.10	3.10	3.50	3.10	2.70			
Folding angle in transport position	°	105	95	105	95	95	95	95	95			
Weight (depending on conditioner)	app- rox. kg	850	1130	800	1060	1040	750	700	650			
MAX CUT mower bed ²		●	●	●	●	●	●	●	●			
Discs (2 knives per disc)		8	7	7	6	6	7	6	5			
Quick knife change		●	●	●	●	●	○	○	○			
Conditioners		-	-	-	-	-	-	-	-			
Conditioner speed	rpm	-	900	-	900	900	-	-	-			
Spring suspension		●	●	●	●	●	●	●	●			
ACTIVE FLOAT suspension		-	-	-	-	-	-	-	-			
Tractor requirements												
Hitch category		II	II	II	II	II	II / Quick- hitch	II / Quick- hitch	II / Quick- hitch			
PTO shaft speed	rpm	1000 (850)	1000 (850)	1000 (850)	540 (460)	540 (460)	540 (460)	540 (460)	540 (460)			
Hydraulic spool valves		1 × da	1 × sa	1 × da	1 × sa	1 × sa	1 × sa	1 × sa	1 × sa			
Equipment												
Hydr. folding protective side covers		-	-	-	-	-	-	-	-			
Wide crop spreading		-	○	-	-	○	-	-	-			
Adjustable swathing plate		-	●	-	●	●	-	-	-			
Outside swathing disc		○	-	○	-	-	○ ⁷	○ ⁷	○ ⁷			
High-cut skids (+30 mm)		○	○	○	○	○	○	○	○			
Double high-cut skids (+60 mm)		○	○	○	○	○	○	○	○			
Wear skids		○	○	○	○	○	○	○	○			
Wear skids (+15 mm)		-	-	-	-	-	-	-	-			
Mower bed protection device (for intensive use)		-	-	-	-	-	-	-	-			
Illuminated warning signs		○	○	○	○	○	○	○	○			
Double mirror		-	-	-	-	-	-	-	-			
Hydr. transport lock		-	-	-	-	-	-	-	-			
Mechanical collision protection		●	●	●	●	●	●	●	●			
Storage frame		○	○	○	○	○	○	○	○			
Headland limit stop		○	●	○	●	●	○ ⁸	○ ⁸	○ ⁸			

¹ C = tine conditioner, RC = roller conditioner, F = front, T = trailed, no suffix = without conditioner
² Standard cut height 40 mm (infinitely variable adjustment 30–70 mm)
³ 1x sa required for setting the ACTIVE FLOAT
⁴ 1x da required for hydraulic folding of the protective cover
⁵ With float position
⁶ Folding
⁷ Swathing plate with these models
⁸ Hydraulic with these models
⁹ Swivelling process and protective cover folding combined with hydraulic non-stop collision protection



We want to make you the best in your field.

In everything we do, the focus is on you, our customers. We understand your daily challenges. Together with you, we develop agricultural technology ensuring you can farm successfully and sustainably today and in the future. Our digital solutions simplify complex processes and make your work so much more convenient.



CLAAS KGaA mbH
Mühlenwinkel 1
33428 Harsewinkel
Deutschland
Tel. +49 5247 12-0
claas.com

520012000925 NO ME 1225 / 00 0259 410 2