



Front loaders

FL FLC FLE

CLAAS



CLAAS front loaders. Everything in hand.

From traditional applications in agriculture and forestry to specialist tasks in the municipal sector – front loaders are used for a huge variety of work.

With more than 20 models in three series, a CLAAS front loader prepares you for anything and considerably extends the capabilities of tractors with an output of 45 to 300 hp. Our front loaders offer enormous convenience, outstanding durability and a high level of safety.

A host of ingenious solutions minimise downtime for tractor maintenance, changing attachments and fitting/removing the front loader, leaving you more time for efficient loading work.





- Highlights 6
- Front loaders and tractors 8
- Operation 10
- Changing attachments 12
- FITLOCK, MACH 14
- Quality, comfort, safety 16
- FL E in detail 18
- FL C in detail 20
- FL in detail 22

- Attachments 28

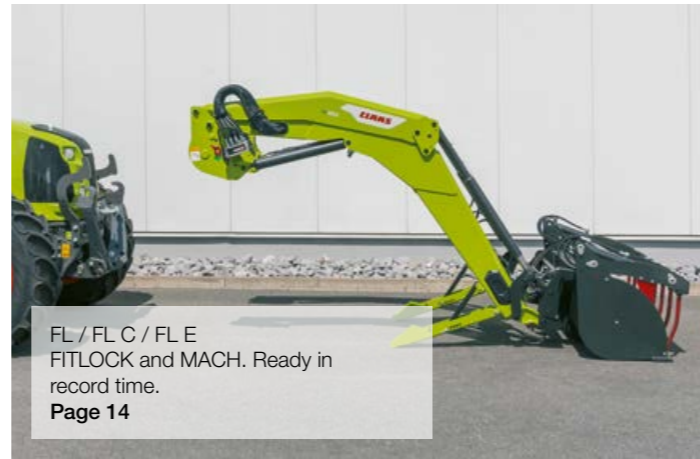
- CLAAS Service & Parts 32

- Features 34

- Technical data 35



FL C
Pressure release. Makes light work of connecting and disconnecting attachments.
Page 13



FL / FL C / FL E
FITLOCK and MACH. Ready in record time.
Page 14



FL / FL C / FL E
FASTLOCK. Lock and unlock attachments hydraulically from the comfort of the cab.
Page 13



FL 250-60.
Simply everything.
- For tractors from 60 to 300 hp
- Hydraulic self-levelling linkage
Page 22



FL 100-40 E.
Simply good.
- For tractors from 45 to 120 hp
- Mechanical self-levelling linkage
Page 18



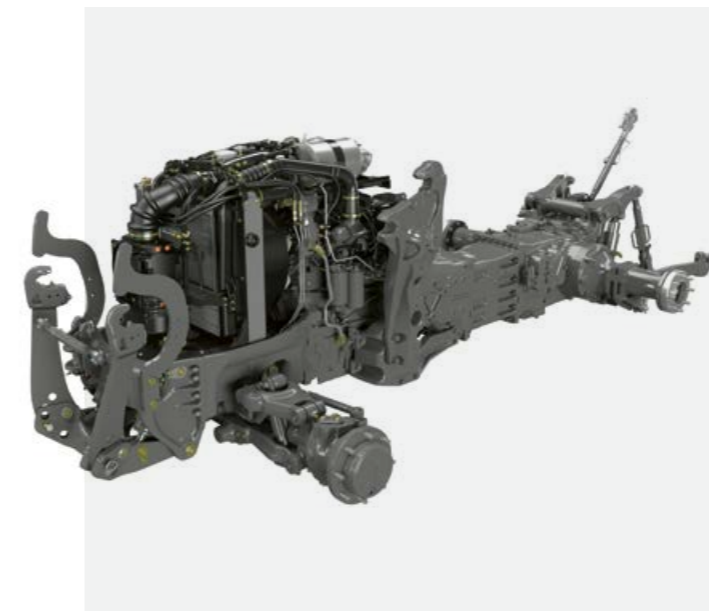
FL 140-40 C.
Simply more.
- For tractors from 45 to 200 hp
- Integrated mechanical self-levelling linkage
Page 20



FL C
LED work lights. Clear as day.
Page 17



FL / FL C
Automatic bucket return. Convenient attachment positioning.
Page 26



Perfectly integrated front loaders.

Specially designed for CLAAS tractors, the front loader mounting brackets transfer mechanical forces across the entire implement frame. They are perfectly matched, allowing ready access to all maintenance points without restricting your tractor's manoeuvrability. So you can work productively and save yourself a lot of valuable time. Whether your front loader is installed at the factory or retrofitted, it will complement your tractor perfectly, creating a powerful unit which boosts the versatility and economic efficiency of CLAAS tractors from 45 to 300 hp.



Clear view.

Thanks to the wide FOPS glass roof (Falling Object Protective Structure), CLAAS tractors are ideally equipped for safe front loader work – providing a clear view of the entire loading area and optimal protection from falling materials.



Front loaders and tractors from CLAAS.

In the farmyard or in the field, CLAAS front loaders are ideal for handling straw and silage bales, handling manure, feeding, loading trailers and much more besides – in short, they are perfectly matched to your tractor and the challenges of your day-to-day work.

Our front loaders make the most of the manoeuvrability, hydraulic power and efficiency of CLAAS tractors. Together, they form a powerful unit which can handle the toughest of tasks.



Enjoy the versatility.

A high-performance front loader isn't much use on its own – which is why CLAAS supplies a wide range of robust and practical attachments. Whether you are moving bulk material, pallets, manure, straw bales or silage bales, safe and precise handling is a given. All our attachments have been developed for professional use, offering high efficiency and outstanding stability.

ELECTROPILOT (AXION 800, ARION 600 / 500, AXOS 200 and ELIOS 300 / 200).

These tractors can be optionally fitted with the ELECTROPILOT system at the factory. The integral joystick in the armrest or right-hand console controls all the front loader functions. It is ergonomically designed for comfort and ease of use.



ELECTROPILOT (ARION 400).

The joystick in the ARION 400 is integrated into the right-hand armrest. In addition to operating the front loader, it can also be used to simultaneously control the QUADRISHIFT / HEXASHIFT transmission. You no longer have to alternate between gear-shifting and front loader actuation, which brings considerable benefits when it comes to operation. With its ergonomic design and razor-sharp precision, the joystick is ideal for all front loader operations.

E-PILOT S (all models).

CLAAS also offers high-quality electrohydraulic operation for retrofitted front loaders in tractors below 100 hp. This smooth, extremely precise operating system is recommended for very intensive front loader work.

FLEXPILOT (all models).

With its hydraulic pilot-controlled operating valve, the FLEXPILOT provides maximum operating comfort and the highest level of precision. To save on hydraulic output and time when lowering, the lift rams are operated in single-acting mode. If required, the double-acting mode can be activated at any time by fully depressing the FLEXPILOT control lever.

PROPILOT (all models).

PROPILOT is a multifunctional single-lever control system which operates using Bowden cables. It has been specially designed for operating the front loader, and has proven its worth in everyday use.



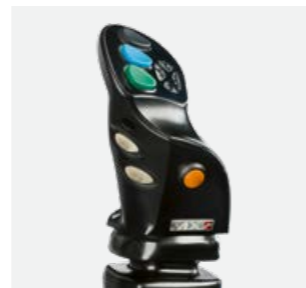
ELECTROPILOT (AXION 800, ARION 600 / 500, AXOS 200 and ELIOS 300 / 200)



ELECTROPILOT (ARION 400)



E-PILOT S (all models)



FLEXPILOT and PROPILOT (all models)

Control lever functions.

	ELECTROPILOT (AXION 800, ARION 600 / 500)	ELECTROPILOT (ARION 400)	ELECTROPILOT (AXOS, ELIOS)	E-PILOT S (all models)	FLEXPILOT (ARION 400)	FLEXPILOT (all models)	PROPILOT (all models)
4-way control lever for lift arm operation	<input type="checkbox"/>	<input type="checkbox"/>	<input type="checkbox"/>	<input type="checkbox"/>	<input type="checkbox"/>	<input type="checkbox"/>	<input type="checkbox"/>
Adjustable flow rate	<input type="checkbox"/>	<input type="checkbox"/>	<input type="checkbox"/>	-	-	-	-
Third and fourth function FASTLOCK and SPEEDLINK	<input type="checkbox"/>	<input type="checkbox"/>	<input type="checkbox"/>	<input type="checkbox"/>	<input type="checkbox"/>	<input type="checkbox"/>	<input type="checkbox"/>
Select drive direction	<input type="checkbox"/>	<input type="checkbox"/>	-	-	<input type="checkbox"/>	-	-
Joystick deactivation	<input type="checkbox"/>	<input type="checkbox"/>	<input type="checkbox"/>	-	<input type="checkbox"/>	<input type="checkbox"/>	<input type="checkbox"/>
Automatic bucket return	<input type="checkbox"/>	<input type="checkbox"/>	-	<input type="checkbox"/>	<input type="checkbox"/>	<input type="checkbox"/>	<input type="checkbox"/>

available - not available

Change attachments in no time at all.



MACH 2.

You can connect the hydraulic couplings between the attachments and front loader in just one easy action, even when the lines are under pressure – you'll never mix up the connections again. The couplings have a flat seal, making oil stains on the ground a thing of the past.



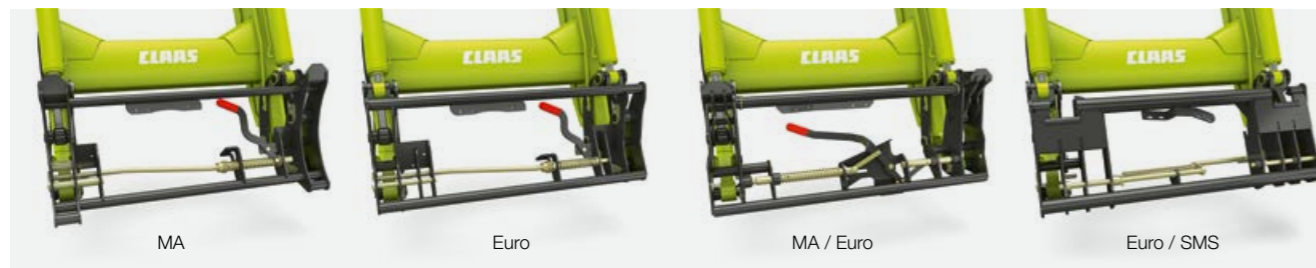
Pressure release with FL C front loaders.

The pressure release lever makes it easy to connect the hydraulic couplings, making light work of changing attachments.



FASTLOCK.

With FASTLOCK, attachments can be hydraulically locked and unlocked from the comfort of the cab.



Changing the attachment is quick and easy.

The front loaders come with a range of quick-change frames (MA, Euro, MA / Euro, Euro / SMS) for attachment locking. This makes it possible to fit a wide variety of attachments, taking into account different standards for attachment types, brands and individual country preferences. As a result, existing attachments can still be used with the new front loader.

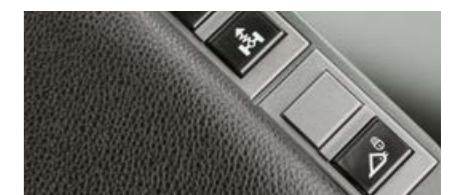
The ingenious design reduces lifting power requirements and provides ideal crowding and dumping angles.

Mechanical attachment locking.

All quick-change frames are equipped with an automatic mechanical locking device as standard. Simply tilt the new attachment upwards to lock the safety bolt into place.

	FL E	FL C	FL
Locking and unlocking			
Mechanical with automatic locking	Two-lever system	One-lever system	One-lever system
FASTLOCK hydraulic locking	–	<input type="checkbox"/>	<input type="checkbox"/>
Mounting system			
EURO	<input type="checkbox"/>	<input type="checkbox"/>	<input type="checkbox"/>
MA	<input type="checkbox"/>	<input type="checkbox"/>	<input type="checkbox"/>
MA / EURO	–	<input type="checkbox"/>	<input type="checkbox"/>
EURO / SMS	–	<input type="checkbox"/>	<input type="checkbox"/>
Third function	<input type="checkbox"/>	<input type="checkbox"/>	<input type="checkbox"/>
Fourth function	–	<input type="checkbox"/>	<input type="checkbox"/>
MACH 2 quick coupler for third and/or fourth function	<input type="checkbox"/>	<input type="checkbox"/>	<input type="checkbox"/>
Pressure release lever for third function	–	<input type="checkbox"/>	–

available – not available



With FASTLOCK, one press of a button is all it takes to lock the attachments.



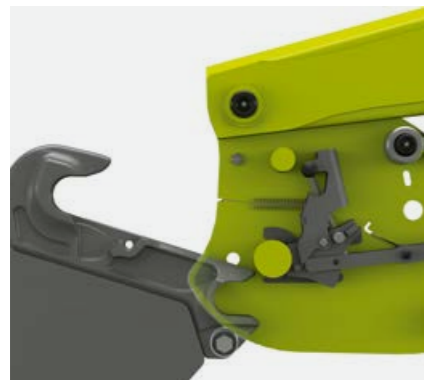
Only leave your cab once.

With a combination of FITLOCK and MACH, you only need to leave your cab once to connect the front loader. Just drive the tractor up to the lift arms: as soon as the FITLOCK system is pre-locked in place, simply get out of the cab, connect the multi-coupling system and stow the support legs in the boom. It's that easy!



The support legs fold easily under the boom and do not obstruct the view of the front loader.

FITLOCK on FL and FL C.



Drive in



Pre-lock



Lock

MACH – just one action.

With the MACH multi-coupling system, you can easily connect all the hydraulic and electrical connections in just one action, even when the lines are under pressure. Simply place the multi-coupling system on the tractor bracket, pull the handle down and everything is connected. The hydraulic connectors have flat seals so they don't drip and remain clean and dry. Problems caused by dirt in the hydraulic system or wrong connections are now a thing of the past.



FITLOCK for effortless fitting and removal.

With the FITLOCK system, you can fit and remove the loader effortlessly without tools. Installing the front loader is child's play. FITLOCK allows you to attach the loader quickly, safely and easily in any situation, even on uneven surfaces. The pre-lock mechanism secures the connection before the FL and FL C front loader locks fully into position. The FL E series has a simplified FITLOCK with a single-stage, manual locking system.



From your driving position in the cab, a glance at the lock indicator is all it takes to check that the lift arms are properly engaged. Detaching the loader is just as quick and easy.



Convenience, safety and quality down to the last detail.



High load capacity.

A large crowd angle – between 47° and 52° at ground level – gives your attachment a high fill capacity, particularly when transporting bulk materials. In the FL and FL C front loaders, the maximum crowd angle also increases by 10% from a lift height of 1.2 m, further preventing material losses.



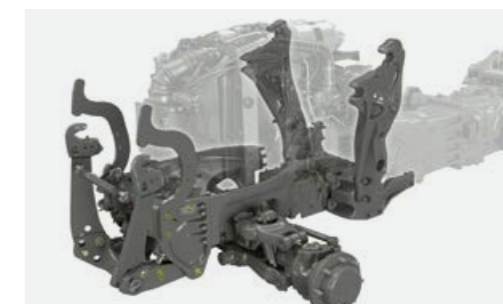
Quality and durability.

The special design of the lift arms provides excellent stability and superb visibility under all conditions. All the pivot points are lubricated and reinforced by a welded, replaceable bush to guarantee a long service life.



Robust bracket.

The front loader bracket transmits the mechanical loads evenly throughout the tractor – the weight is distributed along the tractor's full length. These units can master even the most demanding and heavy-duty tasks with ease.



SHOCK ELIMINATOR.

The SHOCK ELIMINATOR has a nitrogen-filled accumulator which absorbs impacts and protects the tractor, operator and front loader from vibration. Less fatigue and improved concentration produce better work results throughout the day. The SHOCK ELIMINATOR can be switched off for special applications.



The SHOCK ELIMINATOR employs a nitrogen-filled accumulator to reliably minimise impacts, jolts, physical shocks and vibrations.

Safety valve.

Optional safety valves for the lift and tilt rams guarantee safety when using a work platform¹. The valve is not activated until pressure is applied to a line, and closes automatically if pressure is lost, preventing uncontrolled movements of the lift arms.

¹ Always obey national regulations when using a work platform on the front loader.



Thanks to electrical switching in the FL and FL C series, the safety valves can be combined with the SHOCK ELIMINATOR vibration damping system.

Protected grease nipples.

All the grease nipples are recessed in the pins and do not protrude beyond the front loader profile. This means they are well protected and easily accessible. All the main pins have a standard diameter of 40 mm and are rotation-proof, ensuring maximum safety in all loading situations.



Almost as clear as day.

Integrated LED work lights on the FL C model effectively illuminate the work area. Reducing shadows allows you to work with more precision.



FL 100-40 E. Simply good.



Loading made easy.

The FL E is the perfect choice if you are looking for a simple, efficient and robust front loader.

- For tractors from 45 to 120 hp
- Mechanical self-levelling linkage
- Hydraulic lines integrated into the boom
- FITLOCK with manual front loader locking and unlocking
- Third hydraulic function for attachments
- MACH 2 to connect the third function
- Mechanical, automatic locking of attachments
- Folding support legs



Precision tilt indicator.

The clearly visible tilt indicator shows the angle of the attachment in relation to the ground. This allows the operator to position the attachment precisely whilst lowering. The position marker can be adapted to the attachment and the job in hand without tools.



Secure connection with FITLOCK.

With the FITLOCK system, you can fit and remove the loader effortlessly without tools. The FL E series has a simplified FITLOCK with a single-stage, manual locking system. A glance at the lock indicator is all it takes to check that the lift arms are properly engaged. Detaching the loader is just as quick and easy.



Automatic attachment locking.

In the mechanical standard specification, simply tilt the attachment to lock the safety bolt into place. To unlock it, just release the two levers on either side of the quick-change frame.



Easy to fold.

Fold and unfold the support legs simply by moving the pin. Several holes are provided, making it easy to adjust the leg height even on uneven ground.



Safe storage.

The hydraulic lines are routed under the boom, protecting them from damage and leaving a clear view of the attachments.

FL 140-40 C. Simply more.



Secure connection with FITLOCK.

The FITLOCK system ensures easy fitting and removal without tools. The pre-lock mechanism secures the connection before the front loader locks fully into position. From your driving position in the cab, a glance at the lock indicator is all it takes to check that the lift arms are properly engaged. Detaching the loader is just as quick and easy.

Automatic attachment locking.

In the mechanical standard specification, simply tilt the attachment to lock the safety bolt into place. To unlock it, just release the lever on the left side of the quick-change frame. With FASTLOCK (optional), attachments can be hydraulically locked and unlocked from the comfort of the cab.

Unrivalled convenience.

Designed for intensive work, the FL C features productivity-boosting equipment and an innovative design that provides an outstanding view.

- For tractors from 45 to 200 hp
- Integrated mechanical self-levelling linkage
- Hydraulic lines integrated into the boom
- FITLOCK with automatic front loader locking
- Third and fourth hydraulic function for attachments, also available with MACH 2 multicoupler
- Pressure release function for third function
- Mechanical, automatic attachment locking or hydraulic locking and unlocking with FASTLOCK
- Folding support legs
- Additional options: automatic bucket return and integrated LED work lights



Precision tilt indicator.

The clearly visible tilt indicator shows the angle of the attachment in relation to the ground. The position marker can easily be adapted to the attachment and the job in hand without tools. The optional automatic bucket return brings the attachment back to the starting position at the press of a button.



Easy to fold.

Fold and unfold the support legs simply by moving the pin. Several holes are provided, making it easy to adjust the leg height even on uneven ground.



Safe storage.

The hydraulic lines are integrated into the boom to protect them from damage and give the driver a clear view of the attachments.

FL 250-60. Simply everything.



Higher, faster and more accurate.

Discover the intelligent solutions in the FL front loader.

- For tractors from 60 to 300 hp
- Hydraulic self-levelling linkage
- Hydraulic lines integrated into the boom
- FITLOCK with automatic front loader locking
- Third and fourth hydraulic function for attachments
- MACH 2 for connecting the third and fourth function
- Mechanical, automatic attachment locking or hydraulic locking and unlocking with FASTLOCK
- Folding support legs
- Additional options available for greater productivity and convenience: automatic bucket return, synchronised bucket/grab control and SPEEDLINK



Precision tilt indicator.

The clearly visible tilt indicator shows the angle of the attachment in relation to the ground. The position marker can easily be adapted to the attachment and the job in hand without tools. The optional automatic bucket return brings the attachment back to the starting position at the press of a button.



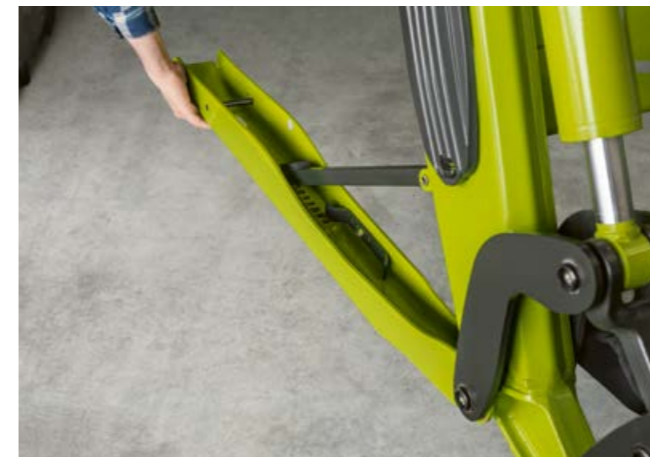
Secure connection with FITLOCK.

The FITLOCK system ensures easy fitting and removal without tools. The pre-lock mechanism secures the connection before the front loader locks fully into position. From your driving position in the cab, a glance at the lock indicator is all it takes to check that the lift arms are properly engaged. Detaching the loader is just as quick and easy.



Automatic attachment locking.

In the mechanical standard specification, simply tilt the attachment to lock the safety bolt into place. To unlock it, just release the lever on the left side of the quick-change frame. With FASTLOCK (optional), attachments can be hydraulically locked and unlocked from the comfort of the cab.



Easy to fold.

The support legs automatically engage in the correct position when the loader is lowered to the ground. The front loader can therefore be fitted and removed quickly without tools.



Safe storage.

The hydraulic lines are integrated into the boom to protect them from damage and give the driver a clear view of the attachments.



Hydraulic self-levelling linkage (PCH).

The FL range of front loaders is equipped with the PCH hydraulic self-levelling linkage, which maintains the angle of the attachment precisely and automatically.

Two hydraulic rams underneath the lift arms compensate for the changes in angle that occur when the lift arms move up and down. They are positioned so that the operator has an uninterrupted view of the front loader.



35% more lifting power.

The PCH linkage is permanently fixed to the tilt rams, which increases the lifting power by 35% without needing any additional energy input. The weight of the loaded attachment generates pressure in the tilt rams which is transferred to the PCH rams and supports the lifting process.

Always at the right angle.

To help you choose the best operating angle for the attachment you are using, the self-levelling rams have two possible positions:



1. Pallet position

Ideal for handling pallets and bales, because the attachment angle remains unchanged.



2. Bucket position

Suitable for all bulk goods. The bucket is tilted slightly inwards during lifting, preventing the contents from falling out.



- 1 Pallet position
- 2 Bucket position



Automatic bucket return – convenient attachment positioning.

The automatic bucket return returns your attachment to its starting position at the touch of a button. This helps you to work comfortably and efficiently, especially on long, repetitive jobs.



Synchro Control System (SCS) – one control for two functions.

The synchronous bucket/grab control system enables you to load larger volumes safely. When filling and emptying, the driver normally has to control the attachment angle and operate the third function virtually at the same time. Thanks to intelligent synchronisation of these two movements, all that's now required is one push of the button. This closes the grab for filling and opens it for dumping. The result: greater productivity.



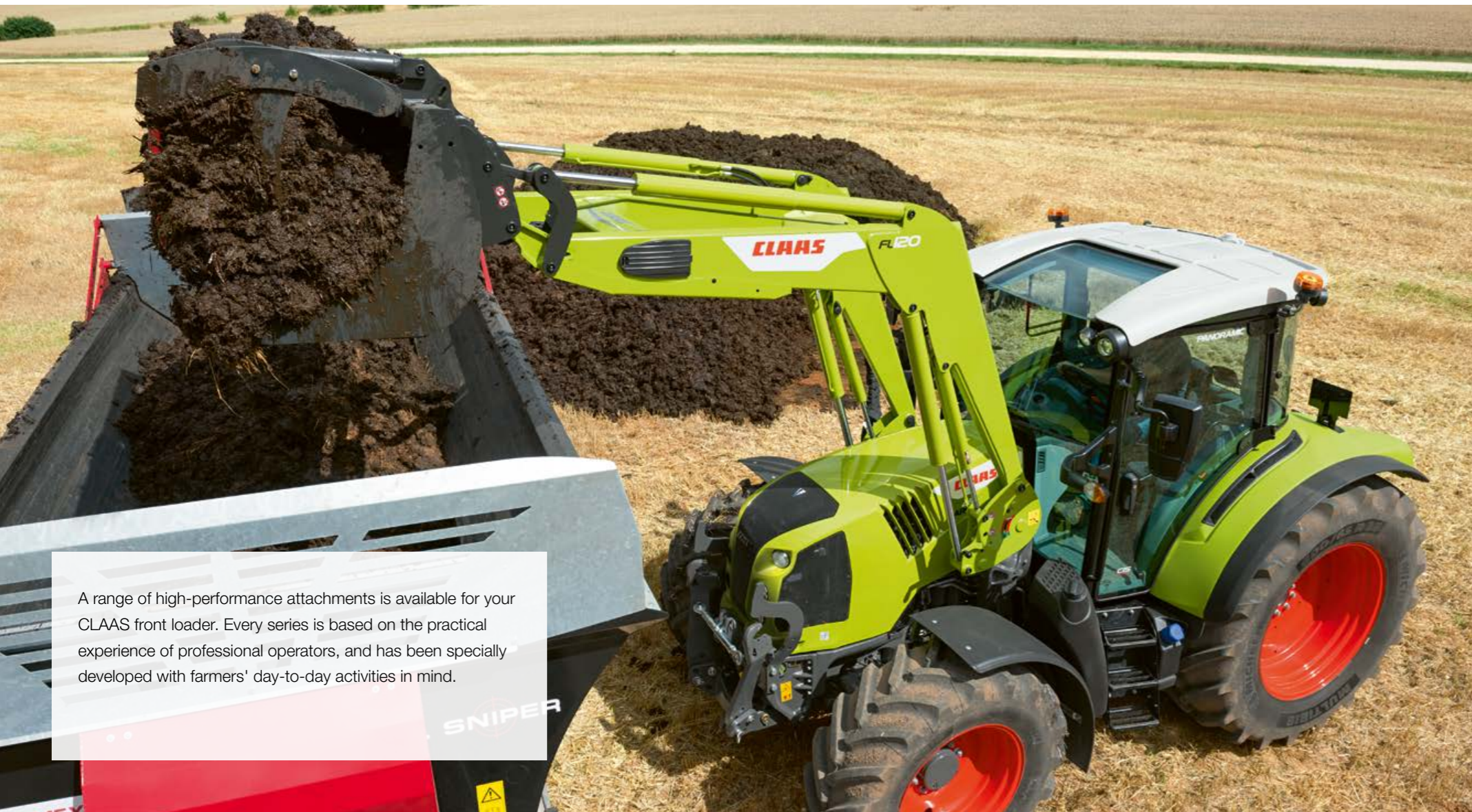
SPEEDLINK.

In addition to hydraulic locking, SPEEDLINK¹ allows you to automatically connect and disconnect all hydraulic and electrical connections from the cab when fitting or removing implements. As soon as the attachment is released, all connections are completely sealed to keep out dirt or other contamination.

¹ SPEEDLINK is only available with the MA quick-change frame.



Bulk material and pallets. High-performance attachments.



A range of high-performance attachments is available for your CLAAS front loader. Every series is based on the practical experience of professional operators, and has been specially developed with farmers' day-to-day activities in mind.

Multi-purpose bucket, BMS¹



	Weight (kg)	Width (mm)	Height (mm)
BMS 120 M	560 l 215	1200	643
BMS 135 M	625 l 230	1350	643
BMS 155 M	725 l 246	1550	643
BMS 175 M	820 l 262	1750	643
BMS 205 M	965 l 318	2050	643
BMS 225 M	990 l 323	2250	643
BMS 180 H	1050 l 399	1800	705
BMS 200 H	1160 l 423	2000	705
BMS 225 H	1305 l 466	2250	705
BMS 245 H	1420 l 488	2450	705

Two side plates for moving loose bulk materials (optional)

¹ Third function required

Universal bucket, BR without teeth



	Weight (kg)	Width (mm)	Height (mm)
BR 180	785 l 266	1820	764
BR 200	875 l 284	2020	764
BR 225	985 l 305	2270	764
BR 245	1070 l 322	2470	764

Pallet fork, TR



	Load capacity (kg)	Weight (kg)	Width (mm)	Tine size (mm)	Height (mm)
TR 1 650 kg	1650	170	1320	1000 x 80 x 40	780
TR 2 500 kg	2500	195	1320	1200 x 100 x 45	780

2.00 m extension kit available as an option

2-tine kit for conversion into bale fork available as an option

Lift those bales up high.



Tined grabs

V 40^{1,3}

V 500¹

V 7000¹

W 500^{1,3}



	Number of stackable bales ⁴	Number picked up simultaneously:			Number of grabs on bale clamp
		round bales	wrapped round bales	square bales	
V 40 ^{1,3}	4	1	–	2	1 x single
V 500 ¹	5	2	–	3	1 x double
V 7000 ¹	6	3	–	4	1 x triple
W 500 ^{1,3}	5	2	1	2	2 x single

C 30¹

C 40¹

U 40¹



	Grab type	Number picked up simultaneously:	
		wrapped round bales	wrapped square bales
C 30 ¹	Clamp	1	–
C 40 ¹	Clamp	1	–
U 40 ¹	Clamp	1	1

¹ Third function required

² Third and fourth function required

³ Optional wrapped-bale clamp

⁴ Bale height 1.2 m

– not available

Whatever it takes. CLAAS Service & Parts.



CLAAS Service & Parts
is there for you 24/7.
service.claas.com

Scan me.



CLAAS service agreements.

Few factors are more crucial to the success of your business than the reliability of your machines. Which is why we offer transparent and predictably priced service products for your CLAAS machine which ensure a high degree of reliability.

Machine connect.

Machine connect provides your service partner with all relevant data from machines equipped with telemetry. This makes remote diagnosis and remote support much easier. Servicing can be carried out more efficiently and machine availability is improved. All you have to do is give your consent.

The availability of products from CLAAS Service & Parts may vary according to country.



Specially matched to your machine.

Precision-manufactured parts, high-quality consumables and useful accessories. Choose our comprehensive product range to be certain of receiving exactly the right solution to ensure 100% operating reliability for your machine.



For your business: CLAAS FARM PARTS.

CLAAS FARM PARTS offers one of the most comprehensive ranges of multi-brand parts and accessories for all agricultural applications on your farm.



Global supply.

The CLAAS Parts Logistics Center in Hamm, Germany, stocks almost 200,000 different parts and has a warehouse area of over 183,000 m². This central spare parts warehouse delivers all ORIGINAL parts quickly and reliably all over the world.



Your local CLAAS distributor.

Wherever you are, you can count on us to always provide you with the service and the contact people you need. Your CLAAS partners are on hand in your local area, ready to support you and your machine around the clock. With know-how, experience, commitment and the best technical equipment. Whatever it takes.

Simply convincing.
An impressive list of features.



Load more, load faster.

- Three series and more than 20 models to meet every need
- Mechanical or hydraulic self-levelling linkage
- Integrated mounting bracket for uniform weight distribution and high stability
- Maximum loading reach and high lifting capacity
- Automatic bucket return for automatic attachment positioning
- SCS for intelligent synchronisation of attachment angle and the third function
- FASTLOCK for convenient attachment locking
- SPEEDLINK for fully automatic fitting and removal of all attachments
- Large selection of quick-change frames and attachments for all your tasks

Unrivalled convenience.

- Five in-cab control options to choose from
- FITLOCK system for quick and easy coupling and removal
- Flat-seal couplings on MACH and MACH 2 quick couplers prevent oil leakage during attachment
- MACH system for easy connection of all electrical and hydraulic lines
- MACH 2 for simple manual connection of attachment hydraulic lines
- SHOCK ELIMINATOR to protect the tractor, front loader, attachment and driver
- Safety valves with electric switching, can be combined with the SHOCK ELIMINATOR

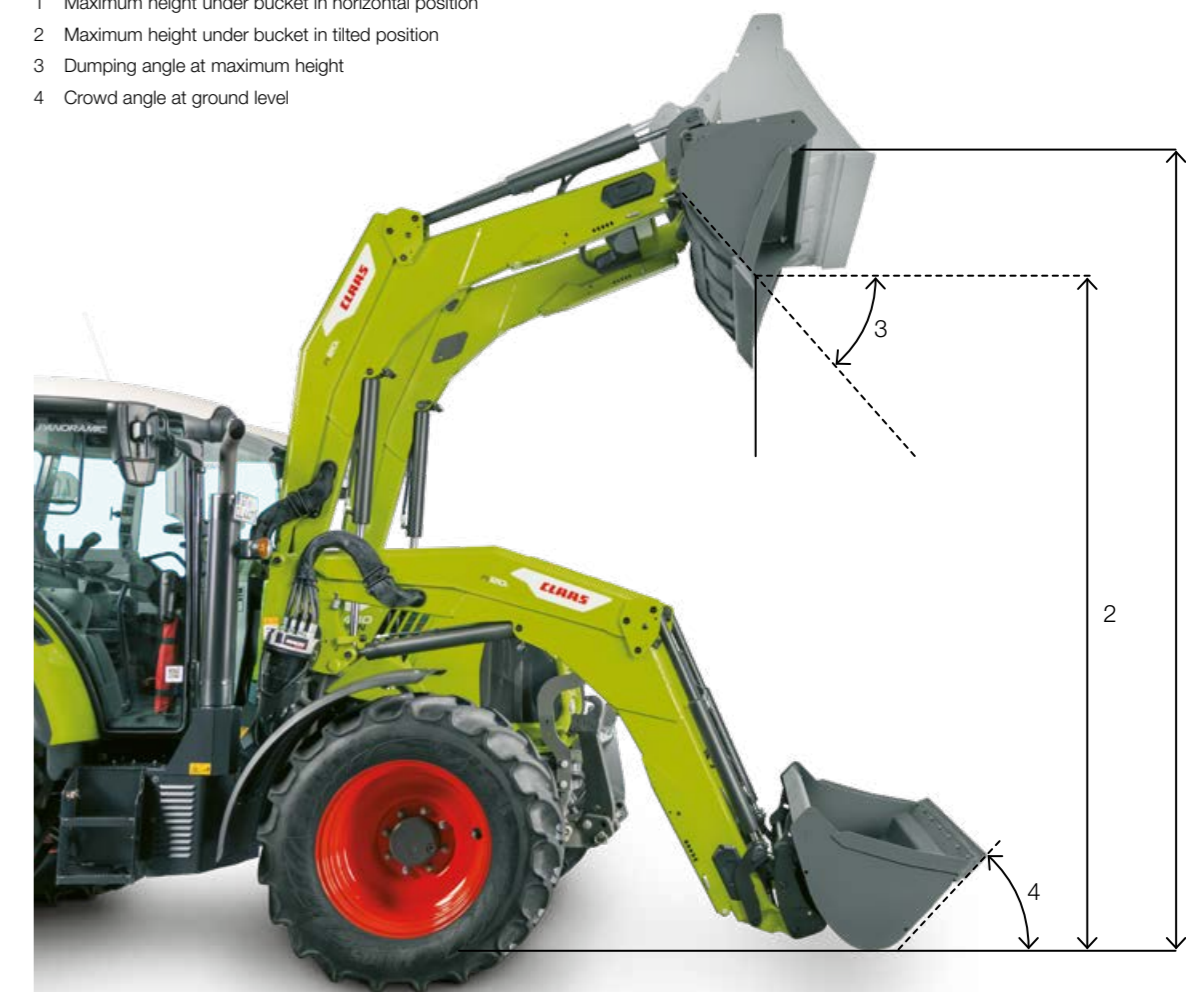
FL 250-60	FL 250	FL 150	FL 140	FL 120	FL 100	FL 80	FL 60
With self-levelling linkage	●	●	●	●	●	●	●
Maximum height at attachment pivot point	m 4.60	4.60	4.50	4.15	4.00	3.85	3.75
Maximum height under bucket in horizontal position (1)	m 4.35	4.35	4.25	3.90	3.75	3.60	3.50
Maximum height under bucket in tilted position (2)	m 3.80	3.80	3.70	3.35	3.20	3.05	2.95
Digging depth	m 0.20	0.20	0.20	0.20	0.20	0.20	0.20
Dumping angle at maximum height (3)	° 50	50	50	55	55	55	52
Crowd angle at ground level (4)	° 51	51	52	52	52	52	47
Tear-out force at attachment pivot point at ground level	kg 3420	3420	2670	2840	2590	2410	1990
Lift capacity at attachment pivot point over entire lift height	kg 2910	2910	2210	2420	2220	2070	1560
Lift capacity at attachment pivot point over entire lift height with increased lift capacity equipment	kg –	–	–	2780	2590	2440	–
Lift capacity on pallet (0.80 m towards the front of forks, at ground level)	kg 3230	3230	2490	2650	2345	2230	1615
Lift capacity on pallet (0.80 m towards the front of forks, at max. height)	kg 2735	2735	2100	2225	2010	1890	1350
Lifting time	s 7.8	7.8	6.0	5.8	5.1	4.30	3.60
Tilting time	s 1.2	1.2	1.1	1.2	0.9	0.9	0.6
Empty weight without optional equipment	kg 819	782	716	598	573	526	480

FL 140-40 C	FL 140 C	FL 120 C	FL 120 C	FL 100 C	FL 100 C	FL 80 C	FL 80 C	FL 60 C	FL 60 C	FL 40 C	FL 40 C
With self-levelling linkage	●	●	–	●	–	●	–	●	–	●	–
Maximum height at attachment pivot point	m 4.50	4.20	4.20	4.00	4.00	3.85	3.85	3.70	3.70	3.50	3.50
Maximum height under bucket in horizontal position (1)	m 4.25	3.95	3.95	3.75	3.75	3.60	3.60	3.45	3.45	3.25	3.25
Maximum height under bucket in tilted position (2)	m 3.70	3.40	3.40	3.20	3.20	3.05	3.05	2.90	2.90	2.70	2.70
Digging depth	m 0.20	0.20	0.20	0.20	0.20	0.20	0.20	0.20	0.20	0.20	0.20
Dumping angle at maximum height (3)	° 50	51	50	52	52	52	52	52	52	50	50
Crowd angle at ground level (4)	° 47	47	47	47	47	47	47	47	47	47	47
Tear-out force at attachment pivot point at ground level	kg 2700	2370	2410	2570	2620	2320	2740	1860	2390	1790	1820
Lift capacity at attachment pivot point over entire lift height	kg 2360	2140	2170	2280	2310	2050	2410	1700	2180	1600	1620
Lift capacity at attachment pivot point over entire lift height with increased lift capacity equipment	kg 2720	2470	–	2630	–	2380	–	2160	–	–	–
Lift capacity on pallet (0.80 m towards the front of forks, at ground level)	kg 2180	1880	1620	2015	1725	1785	1800	1390	1535	1350	1100
Lift capacity on pallet (0.80 m towards the front of forks, at max. height)	kg 2090	1880	1430	1985	1490	1785	1535	1430	1370	1365	940
Lifting time	s 6.0	5.00	5.00	5.00	5.00	4.30	5.00	3.50	4.30	3.1	3.1
Tilting time	s 2.3	1.9	1.6	1.9	1.6	1.9	1.6	1.4	1.4	1.4	1.4
Empty weight without optional equipment	kg 726	671	553	614	527	561	486	533	463	493	438

● standard ○ optional – not available

FL 100-40 E	FL 100 E	FL 60 E	FL 40 E
With self-levelling linkage	●	●	●
Maximum height at attachment pivot point	m 4.00	3.80	3.50
Maximum height under bucket in horizontal position (1)	m 3.65	3.45	3.15
Maximum height under bucket in tilted position (2)	m 3.00	2.80	2.50
Digging depth	m 0.15	0.15	0.15
Dumping angle at maximum height (3)	° 55	55	55
Crowd angle at ground level (4)	° 47	47	47
Tear-out force at attachment pivot point at ground level	kg 2300	2180	2000
Lift capacity at attachment pivot point over entire lift height	kg 2170	2020	1600
Lift capacity on pallet (0.80 m towards the front of forks, at ground level)	kg 2000	1700	1400
Lift capacity on pallet (0.80 m towards the front of forks, at max. height)	kg 1800	1575	1350
Lifting time	s 5.00	4.30	3.70
Tilting time	s 2.1	2.0	1.8
Empty weight without optional equipment	kg 500	440	430

- 1 Maximum height under bucket in horizontal position
- 2 Maximum height under bucket in tilted position
- 3 Dumping angle at maximum height
- 4 Crowd angle at ground level



CLAAS continually develops its products to meet customer requirements. This means that all products are subject to change without notice. All descriptions and specifications in this brochure should be considered approximate and may include optional equipment that is not part of the standard specifications. This brochure is designed for worldwide use. Please refer to your nearest CLAAS dealer and their price list for local specification details. Some protective panels may have been removed for photographic purposes in order to present the function clearly. To avoid any risk of danger, never remove these protective panels yourself. In this respect, please refer to the relevant instructions in the operator's manual. All technical specifications relating to engines are based on the European emission regulation standards: Stage. Any reference to the Tier standards in this document is intended solely for information purposes and ease of understanding. It does not imply approval for regions in which emissions are regulated by Tier.

Perfect match guaranteed.

Three series, over 20 models – with this much choice, you're sure to find a front loader that exactly matches your CLAAS tractor and your business. Whether for farming or forestry work, handling straw and silage bales, handling manure, feeding, or loading trailers, there's a perfect CLAAS front loader for your ELIOS, AXOS or ARION, ideally matched to all your day-to-day requirements.



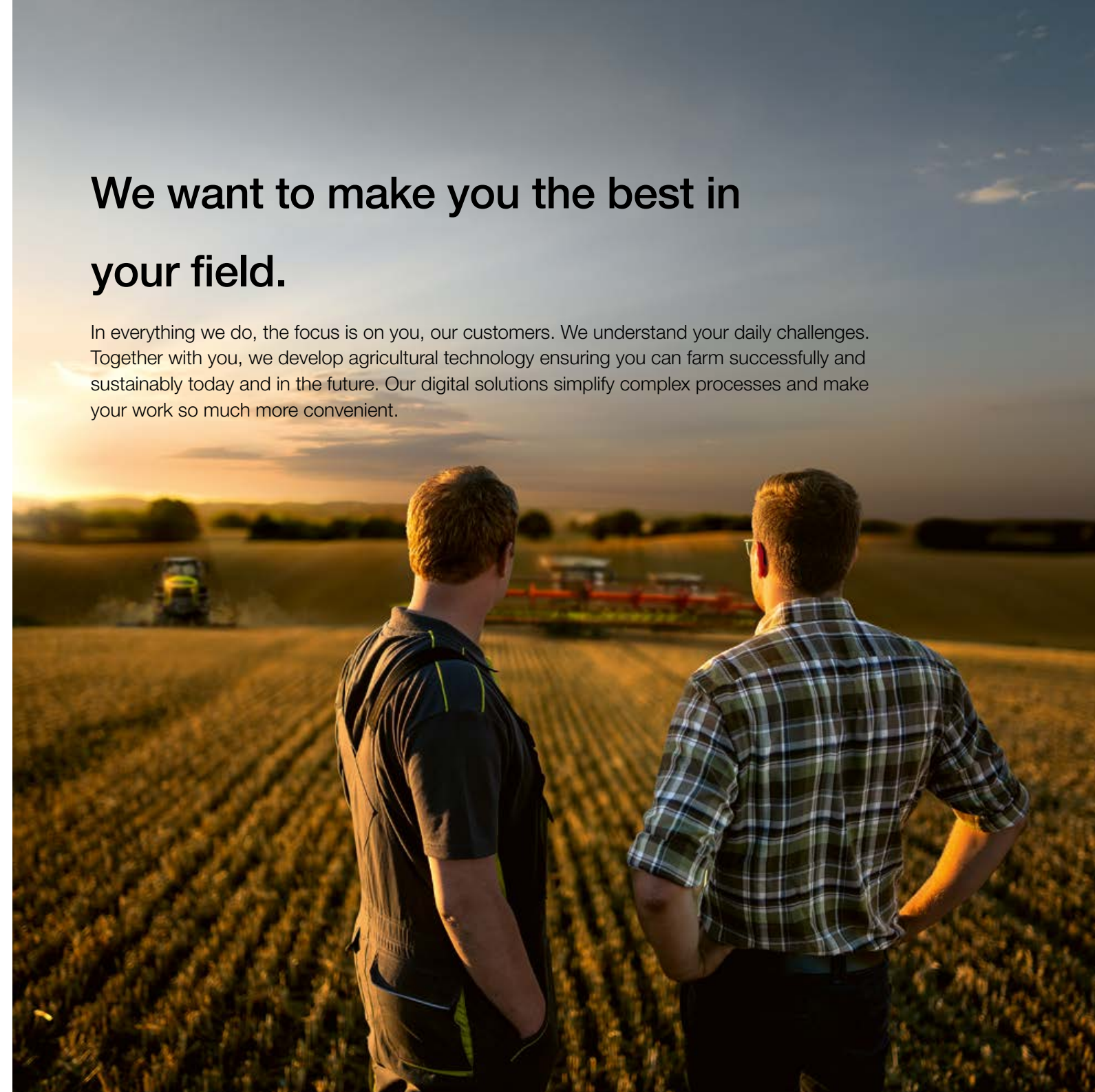
Design your ideal front loader in the CLAAS Configurator or consult your dealer.
claas.com

Front loaders	FL 100-40 E	FL 140-40 C	FL 250-60
For tractors with outputs of	45 to 120 hp	45 to 200 hp	60 to 300 hp
Self-levelling linkage	Mechanical	Mechanically integrated	Hydraulic
Operating options			
ELECTROPILOT	<input type="checkbox"/>	<input type="checkbox"/>	<input type="checkbox"/>
E-PILOT S	<input type="checkbox"/>	<input type="checkbox"/>	<input type="checkbox"/>
FLEXPILOT	<input type="checkbox"/>	<input type="checkbox"/>	<input type="checkbox"/>
PROPILOT	<input type="checkbox"/>	<input type="checkbox"/>	<input type="checkbox"/>
Front loaders: Fitting and removal			
FITLOCK: rapid fitting and removal of the front loader	●	●	●
MACH: easy connection of all electrical and hydraulic lines	●	●	●
Folding support legs	●	●	●
Attachments: Fitting and removal			
Third hydraulic function for attachments	○	○	○
Fourth hydraulic function for attachments	–	○	○
Pressure release lever for third function	–	○	–
MACH 2: quick coupler for the hydraulic connections between the attachment and the front loader	○	○	○
Mechanical, automatic locking of attachments	●	●	●
FASTLOCK: hydraulic locking and unlocking of attachments	–	○	○
SPEEDLINK: hydraulic locking and unlocking of attachments, plus automatic connection and disconnection of all hydraulic and electrical connectors	–	–	○
Comfort and safety			
SHOCK ELIMINATOR vibration damping	●	●	●
Safety valve	○	○	○
LED work lights	–	○	–
Automatic bucket return: automatically returns the attachment to the starting position	–	○	○
Synchro Control System: intelligent synchronisation of attachment angle and the third function	–	–	○

● standard ○ optional □ available – not available

We want to make you the best in your field.

In everything we do, the focus is on you, our customers. We understand your daily challenges. Together with you, we develop agricultural technology ensuring you can farm successfully and sustainably today and in the future. Our digital solutions simplify complex processes and make your work so much more convenient.



CLAAS KGaA mbH
 Mühlenwinkel 1
 33428 Harsewinkel
 Deutschland
 Tel. +49 5247 12-0
claas.com

380012000124 KK LC 0225 / 00 0259 235 5